

Installation Instructions

NetBright® Spotlight

MBN350 / MBN340

Thank you for purchasing the NetBright® Motion Sensing Spotlight. Your spotlight was created to allow for multiple lights to work as a group in order to improve the conditions of your home, workplace or anywhere you need light. This technology contributes to a safer environment and provides bright light anywhere.

What is included per light:

- Wireless Spotlight
- Mounting Base
- 3 Screws
- 3 Anchors

What you need to install:

- 1 Small Screwdriver
- 3 D-Cell Alkaline Batteries

Spotlight Features:

Motion/Light Sensor: Light instantly turns on when it detects motion from up to 30 feet away. The light sensor conserves battery life by preventing the light from activating in daylight.

Auto Shut-off: Light shuts off automatically after 20 seconds if no motion is detected.

Fully Adjustable: Light can be rotated 360° as well as up and down.

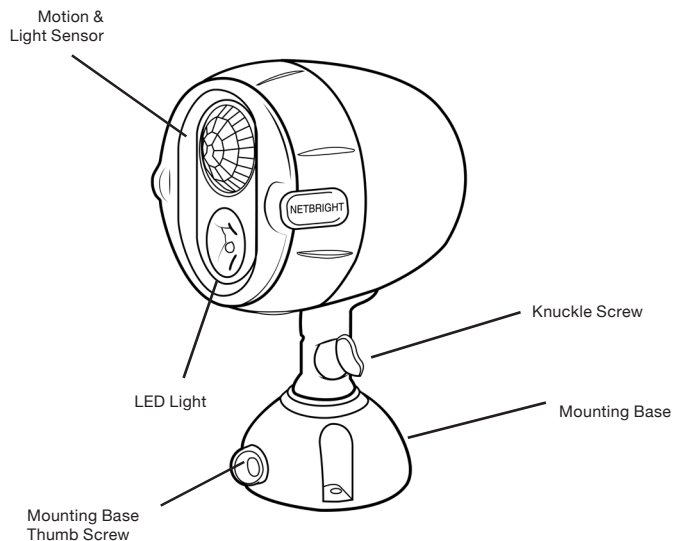
Bright LED: 200 Lumens covers up to 400 sq ft.

Durable, Weather Resistant: Tight seals and UV resistant material allow the light to work in all weather conditions.

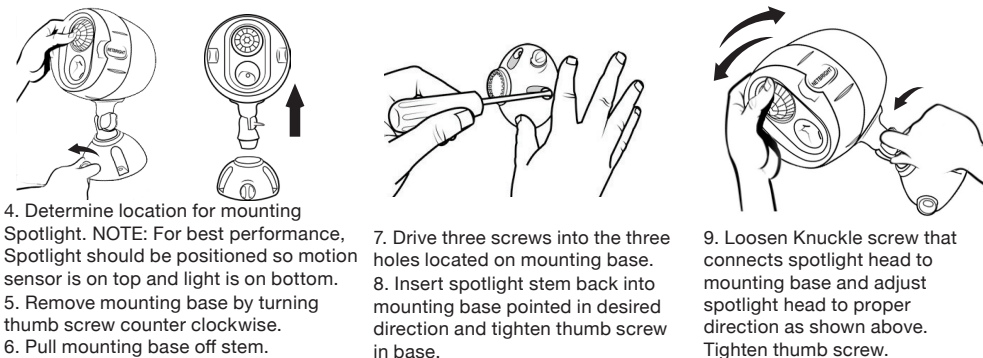
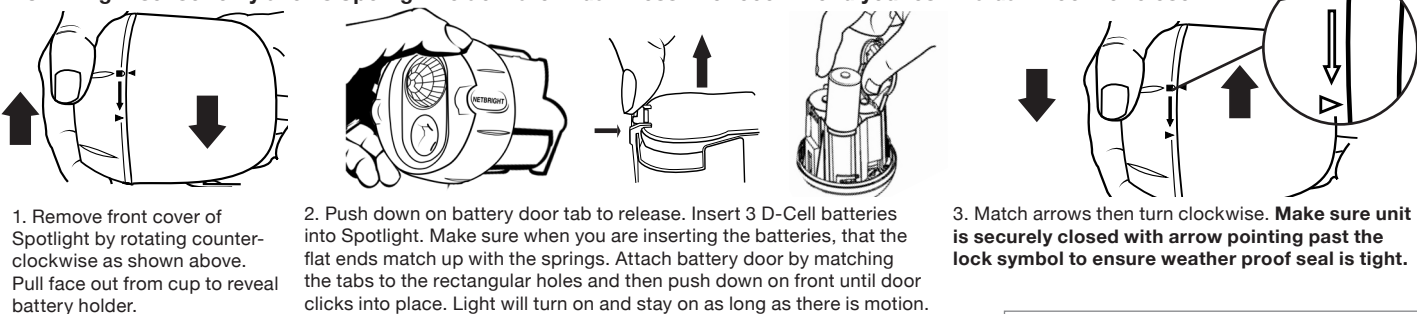
Multiple Lights: Spotlights will activate simultaneously when any spotlight within the network detects motion. They will deactivate simultaneously if no motion is detected in the group.

Tips:

- Use only new alkaline D-Cell batteries with 1.5V rating.
- Do not mix old and new batteries. If batteries are not new, it may cause the light to malfunction.
- Install batteries with polarity in correct position.
- Light may activate when batteries are inserted. Simply take light into a dark room. Allow batteries to settle, then test activation.
- **If your light will not turn off, it means that it is time to replace the batteries.**



NOTE: Light sensor only allows Spotlight to activate in darkness. We recommend you test in a dark room or closet.



Setting up Lights to a Network

After inserting the batteries, choose a group or channel for your spotlights with the dipswitches next to the battery compartment. Ensure all units are on the same channel by matching dipswitches.

* Spotlights set to the same group that are within 150 ft range of each other will work together automatically

Battery Caution:

- 1) Do not mix old and new batteries
- 2) Do not mix Alkaline, Standard (Carbon-Zinc) or Rechargeable (Nickel Cadmium) or (Nickel Metal Hydride) batteries
- 3) Do not dispose of batteries in fire
- 4) Batteries should be recycled or disposed of as per state and local guidelines