

Installation Instructions

Mini Spotlight

MB300 / MB310

Thank you for purchasing the Mr Beams® Mini Spotlight. We are committed to eliminating darkness using the latest in Light-Emitting Diodes (LEDs). LEDs are the most efficient and durable light sources available. We are certain that your light will contribute to a safer environment and provide light where you need it at a very reasonable cost.

What is included per light:

- 1 Wireless Spotlight
- Mounting Base
- 2 Screws
- 2 Anchors

What you need to install:

- 1 Small Screwdriver
- 3 C-Cell Alkaline Batteries

Spotlight Features:

Motion/Light Sensor: Light instantly turns on when it detects motion from up to 25 feet away. The light sensor conserves battery life by preventing the light from activating in daylight.

Auto Shut-off: Light shuts off automatically after 30 seconds if no motion is detected.

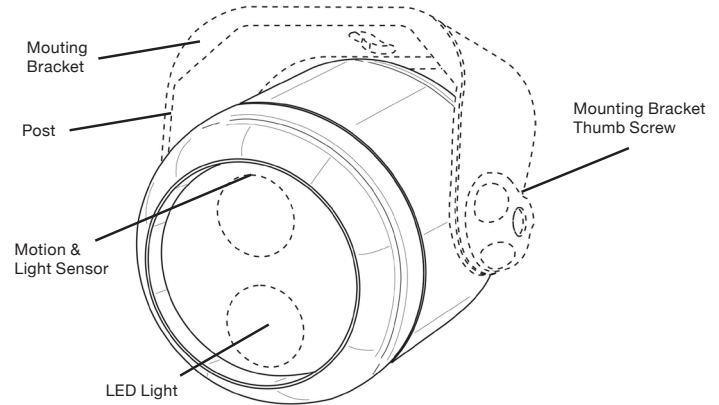
Adjustable: Bracket allows light to angle up or down.

Bright LED: 80 Lumens covers up to 350 sq ft.

Durable, Weather Resistant: Tight seals and UV resistant material allow the light to work in all weather conditions.

Tips:

- Use only new alkaline C-Cell batteries with 1.5V rating.
- Do not mix old and new batteries. If batteries are not new, it may cause the light to malfunction.
- Install batteries with polarity in correct position.
- Light may activate when batteries are inserted. Simply take light into a dark room. Allow batteries to settle, then test activation.
- **If your light will not turn off, it means that it is time to replace the batteries.**

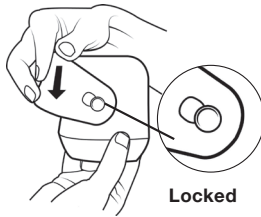


NOTE: Light sensor only allows Spotlight to activate in darkness. We recommend you test in a dark room or closet.

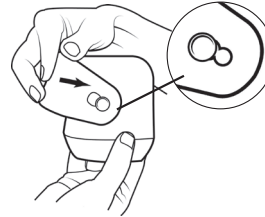
Set Up



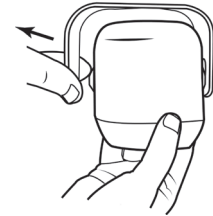
1. Unscrew thumbscrew on mounting bracket by turning counter-clockwise and set aside.



2. Tilt bracket back slightly.

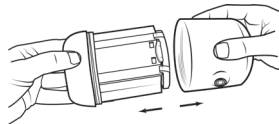


3. Push bracket down toward light to unlock from keyhole.



4. Gently pull up on post side of bracket and lift off of light.

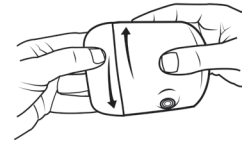
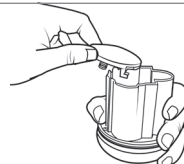
Install/Change Batteries



5. Remove front cover of spotlight by unscrewing counter-clockwise. Pull face from cup to reveal battery holder.

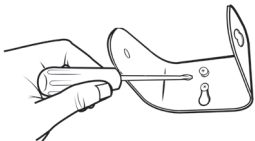


6. To release battery door push into the tab on the cover and pull up. Insert 3 C-Cell batteries, with flat side to spring. Attach battery door by inserting tabs into the rectangular holes then push down on front until door clicks into place.

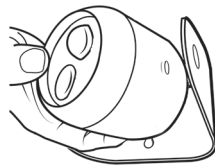


7. Screw face of spotlight back into the cup by turning clockwise 3 full rotations until tightly closed.

Mounting Spotlight

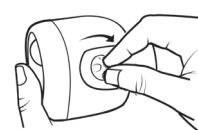


8. Determine mounting location and drive two screws directly through two holes in the mounting bracket.



9. First, slide the post into the bracket, then slide down into the locked position.

10. Align opposite end with the screw to the hole.



11. Choose preferred angle of light, then tighten thumbscrew to lock in position.

Battery Caution:

- 1) Do not mix old and new batteries
- 2) Do not mix Alkaline, Standard (Carbon-Zinc) or Rechargeable (Nickel Cadmium) or (Nickel Metal Hydride) batteries
- 3) Do not dispose of batteries in fire
- 4) Batteries should be recycled or disposed of as per state and local guidelines