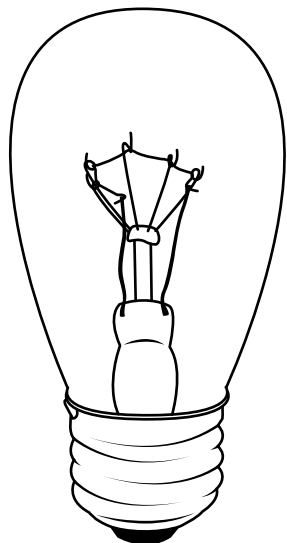


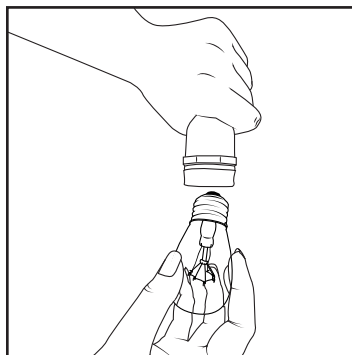


**MB51023
INCANDESCENT S14
REPLACEMENT BULBS**

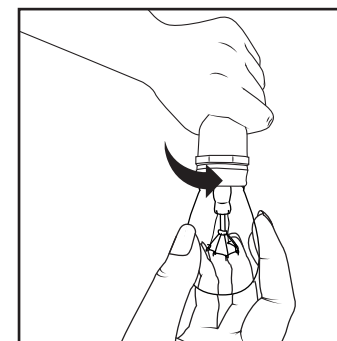


Bulb Wattage	Bulb Type	Bulb Base	Dimmable
11	S14	E26	Yes

INSTALLATION



1. Ensure the bulb is compatible with the cord based on the wattage and socket type. See chart above for specs.



2. Unplug the string light cord, then screw the bulb into the socket.*

*We recommend hanging the string before connecting the bulbs to avoid any possible damage to the bulbs during the mounting process.

Customer Support

9 a.m. - 5 p.m. EST

(877) 298-9082

customerservice@mrbeams.com

Mailing Address

Mr Beams U.S.
600 Beta Drive, Unit 100
Mayfield Village, OH 44143

www.mrbeams.com

1 YEAR WARRANTY AGAINST DEFECTS

All Mr Beams products are guaranteed against defects in workmanship and materials for 1 year from purchase. Warranties implied by law are subject to the same time period limitation. Some states do not allow limitations on how long an implied warranty lasts, so this time limitation may not apply to you. If the product fails due to a manufacturing defect during normal use, return the product and dated sales receipt to the store where purchased for replacement OR send the product and the dated sales receipt to Mr Beams' mailing address. Not covered – Bulbs are not covered by this warranty. Repair service, adjustment and calibration due to misuse, abuse or negligence are not covered by this warranty. Unauthorized service or modification to this product or of any furnished components will void this warranty in its entirety. This warranty does not include reimbursement for inconvenience, installation, setup time, loss of use, postage, unauthorized service, or other products used in conjunction with, but are not supplied by, Wireless Environment. This warranty gives you specific legal rights, and you may also have other rights which vary from state to state.

Register your light to extend your warranty to two years at mrbeams.com/register

TIPS

If a light bulb breaks while still screwed in the socket, unplug the cord and remove the remnants of the bulb. Use gloves or an object such as half a potato, sponge, etc. to protect your hands during the removal process.